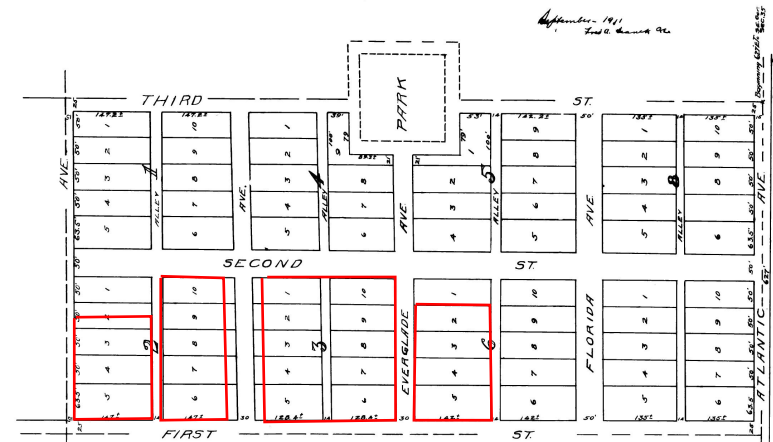


PLAT
OF
CAMPBELL AND SAXON ADDITION
POMPANO, FLA.

Described as follows: Beginning at a point 627' W. of SE. cor. Sec. 35-48-42,
N. 135° W. 627' S. 152', E. 627' 75' 66g.
Block Numbers will not conform with general enumeration of town plat.
Scale 100' = 1" = 1/4"

September 1911
Filed & Approved



STATE OF FLORIDA
COUNTY OF PALM BEACH } ss
This instrument was filed for record this 6th
day of September, 1911, and duly
recorded in the 6th day of September
1911, in Book 125 of Public
Records, and the same is hereby
certified to be correct.
By Robert B. Henderson
County Clerk

125

Copied by
BOWELL & HOLSTLAW
Under Supervision of
CHARLES
County Engineer

Passed by CHM Checked by JRM